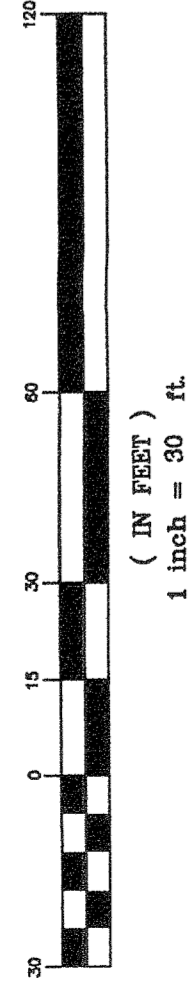


MOORE'S RESUBDIVISION

BEING A RESUBDIVISION OF SECTION 21 (TOWNSHIP 40 NORTH, RANGE 9 EAST OF THE THIRD PRINCIPAL MERIDIAN) IN DUPAGE COUNTY, ILLINOIS.

P.I.N. 01-21-201-030

GRAPHIC SCALE



NORTH

FOUND CONCRETE MONUMENT 0.09' S. & 0.03' E.

FOUND IRON PIPE 11.52' W. & 0.14' S.

EXISTING 10' PUBLIC UTILITY EASEMENT HERETOFORE DEDICATED PER DOC. 634139

STORMWATER DRAINAGE AND WETLAND DETENTION BASIN EASEMENT HEREBY GRANTED

LOT 2

79,506.207 sq. ft.
1.825 acres

LOT 5

LOT 1

59,012.025 sq. ft.
1.353 acres

220.27'

15' DRAINAGE AND PUBLIC UTILITY EASEMENT HEREBY GRANTED

5' DRAINAGE AND PUBLIC UTILITY EASEMENT HEREBY GRANTED

159.88'

S90°00'00"W

374.27'

S00°00'00"W

NOT INCLUDED

FOUND CONCRETE MONUMENT 0.08' N. & ON LINE

50' BLDG. LINE PER DOC. 634139

SOUTH LINE OF LOT 5

REC. = 519.3'

160.00' S87°47'29"W

SMITH ROAD

EAST LINE OF STATE HIGHWAY ROUTE 59

NO.	DATE	DESCRIPTION	BY
1	04/11/06	LOTS & SET EIGHT CORNER RECALC PER TALK. W.S. 1438 DATED 03/21/06 OF MASSIE CONSULTANTS.	smg



GENTILE & ASSOCIATES, INC.
PROFESSIONAL LAND SURVEYORS

100 W. WASHINGTON ST. SUITE 200
LOMBARD, ILLINOIS 60148
PHONE (630) 916-6282
FAX (630) 916-6284

ORDERED BY: B. MOORE
PREPARED BY: ADT
ORDER NO. 02-18268-05-RESUB.-REV1

PAGE 1/2

